

HEAT RECOVERY VENTILATOR

Model 12LC

890 to 1170 cfm (0.4 in. w.g.)



FOR LIGHT COMMERCIAL APPLICATIONS

High CFM ventilation for small business owners concerned about indoor air quality (excess moisture, smoke, odors and cleanliness).

Suitable for installation above a suspended ceiling, mechanical room or suspended from a ceiling, this model delivers year-round comfort and sensible heat recovery with virtually no cross leakage. On this unit, the heat exchange efficiency can reach up to 60%.

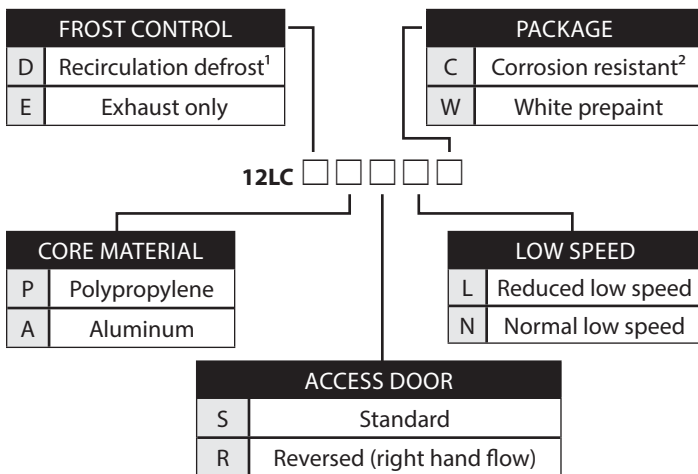
- Best efficiency in its category
- The most compact unit on the market
- Only 24.5" high for false ceiling installation
- Defrost system
- Two-speed control
- Low voltage remote switch

REPAIRS AND MAINTENANCE

All parts of the 12LC such as the large access door and the entire motor sub-assembly can be removed for ease of maintenance.

Furthermore, the electronic circuit board reduces electro-mechanical parts, minimizing repair time to a minimum.

ORDERING EXAMPLE



¹ When ordered, the recirculation defrost damper module is factory installed.

² Not recommended with aluminum cores.

Available at:

Controls

- Built-in electronic circuit board ready to receive one of the following main controls:
 - Venta (Venmar) no. 40310
 - Basic (vånEE) no. 40210

Heat recovery cores

Dimensions: 12" x 12" x 13.125"

Exchange surface: 200 ft²

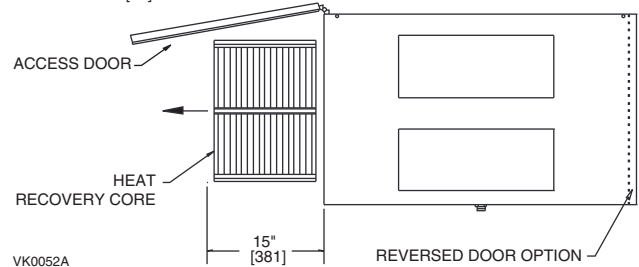
Weight: 9.5 lb.

Type: plate to plate core

Material: polypropylene (3) or aluminum (3)

Warranty: 15 years

A MINIMUM OF 15" [381] CLEARANCE FROM ANY OBSTRUCTION IS REQUIRED FOR REMOVAL OF HEAT RECOVERY CORES, FANS, ETC. THE ACCESS DOOR CAN BE REMOVED FROM CABINET WITH ONLY 2" [51] OF CLEARANCE.



Options

- Aluminum heat recovery cores
- Reversed access door
- Medium efficiency air supply filters
- Recirculation defrost module
- Reduced low speed

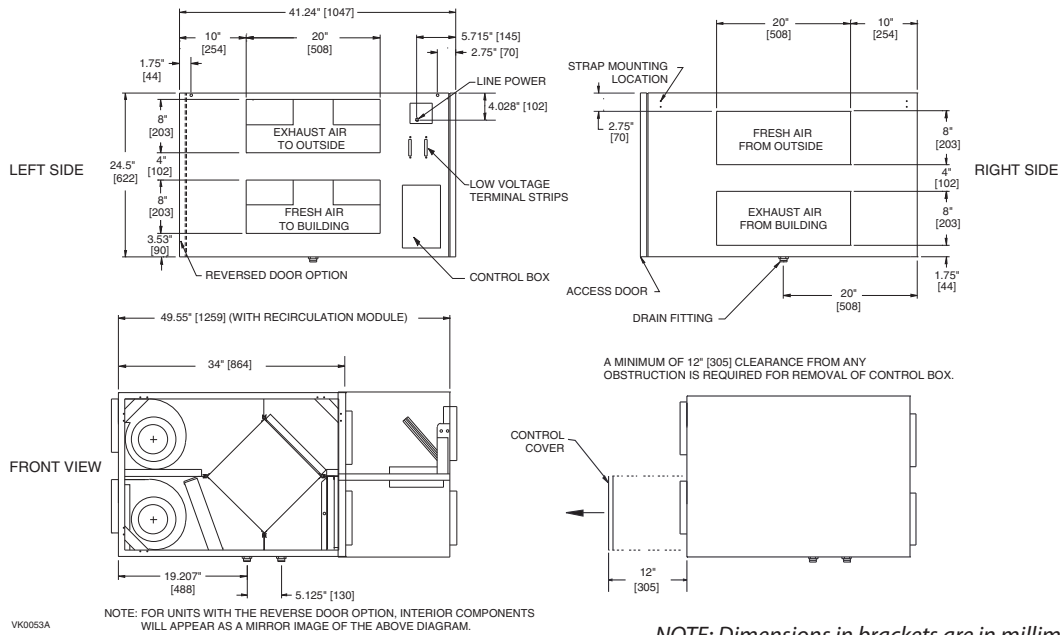
Requirements and Standards

- Complies with the CSA C22.2, no. 113 Standard applicable to ventilators
- Complies with UL Standard 1812 - ducted Heat Recovery Ventilators

Warranty

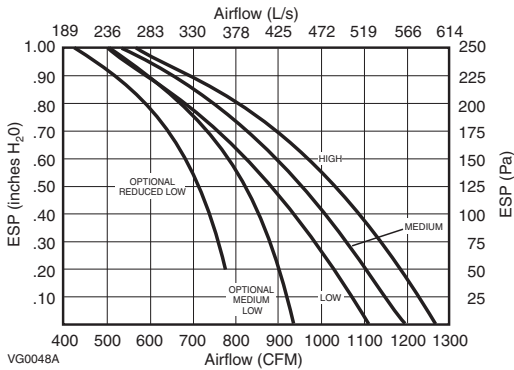
The 12LC unit is fully protected by a 2-year warranty on parts, the best in the industry, and the heat recovery cores are covered by a 15-year warranty.

DIMENSIONS AND SERVICE CLEARANCES: 12LC



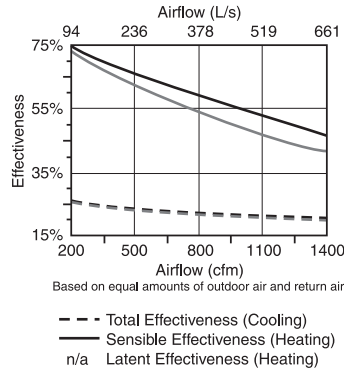
NOTE: Dimensions in brackets are in millimeters.

PERFORMANCES



NOTE:
Units are factory set on low speed as minimum setting.
The reduced low speed is optional and is factory set
Use of MEF filters will add an additional system pressure of: 0.18 in. w.g. @ 1200 cfm with clean filters.

EFFECTIVENESS



Ratings outside the scope of the ARI Energy Recovery Ventilation Certification Program.

Model Number: PHE500-13.1H-12S-0.11

Model Number: AHE500-13.1H-12S-0.14T

Type: Plate (Plate) Nominal Airflow: 300 (300) scfm
Pressure Drop: 0.51 (0.21) inches

Leakage Ratings

	Pressure Differential	EATR	OACF	Purge Angle or Setting
Test 1:	-5.00 (-3.00) inches	0% (0%)	1.00 (1.00)	N/A (N/A)
Test 2:	0.00 (0.00) inches	0% (0%)	1.00 (1.00)	N/A (N/A)
Test 3:	5.00 (3.00) inches	0% (0%)	1.00 (1.00)	N/A (N/A)

Thermal Effectiveness Ratings at 0" Pressure Differential

	Sensible	Latent	Total
100% Airflow Heating Condition:	55% (52%)	0% (0%)	36% (34%)
75% Airflow Heating Condition:	61% (58%)	0% (0%)	40% (38%)
100% Airflow Cooling Condition:	47% (46%)	0% (0%)	18% (18%)
75% Airflow Cooling Condition:	53% (51%)	0% (0%)	20% (20%)
	Net Sensible	Net Latent	Net Total
100% Airflow Heating Condition:	55% (52%)	0% (0%)	36% (34%)
75% Airflow Heating Condition:	61% (58%)	0% (0%)	40% (38%)
100% Airflow Cooling Condition:	47% (46%)	0% (0%)	18% (18%)
75% Airflow Cooling Condition:	53% (51%)	0% (0%)	20% (20%)



Energy recovery component certified in accordance with ARI Standard 1060-2000. Actual performance in packaged equipment may vary.

VG0049A

NOTE: All specifications are subjected to change without notice.

SPECIFICATIONS

- Model: 12LC
- Total assembled weight:
 - With polypropylene cores: 186 lb.
 - With aluminum cores: 208 lb.
- All duct connections: 20" x 8"
- Drains: 3/4" threaded fittings
- Housing: 20 ga. pre-painted steel
- Filters: 6 reticulated washable foam filters (20 ppi) and 3 optional disposable 30% medium efficiency filters
- Mounting: Reinforced rubber straps
- Insulation: 1" foil faced and 1" acoustic fiberglass wool
- Supply and exhaust blower motors:
 - Motor type: PSC motors with sealed sleeved bearings
 - 3 speeds (2 available to customer)
 - R.P.M.: 1625 - H.P.: 1/3
 - Fan type: direct drive centrifugal blower 7 1/8" x 6"
 - Housing: galvanised steel
- Fans speed control:
 - Low, medium and high speeds
 - 2 speeds available to user
 - Low (or optional reduced low) or medium (or optional reduced medium) speed is selected at the time of installation
- Unit electrical characteristics:

Volts	Amps	Watts
115	11.7	1275

Project:	REMARKS
Location:	
Model No.: 12LC	
Quantity:	
Submitted by:	Date: